

AUTEL[®]
Powering the Planet

zenyge

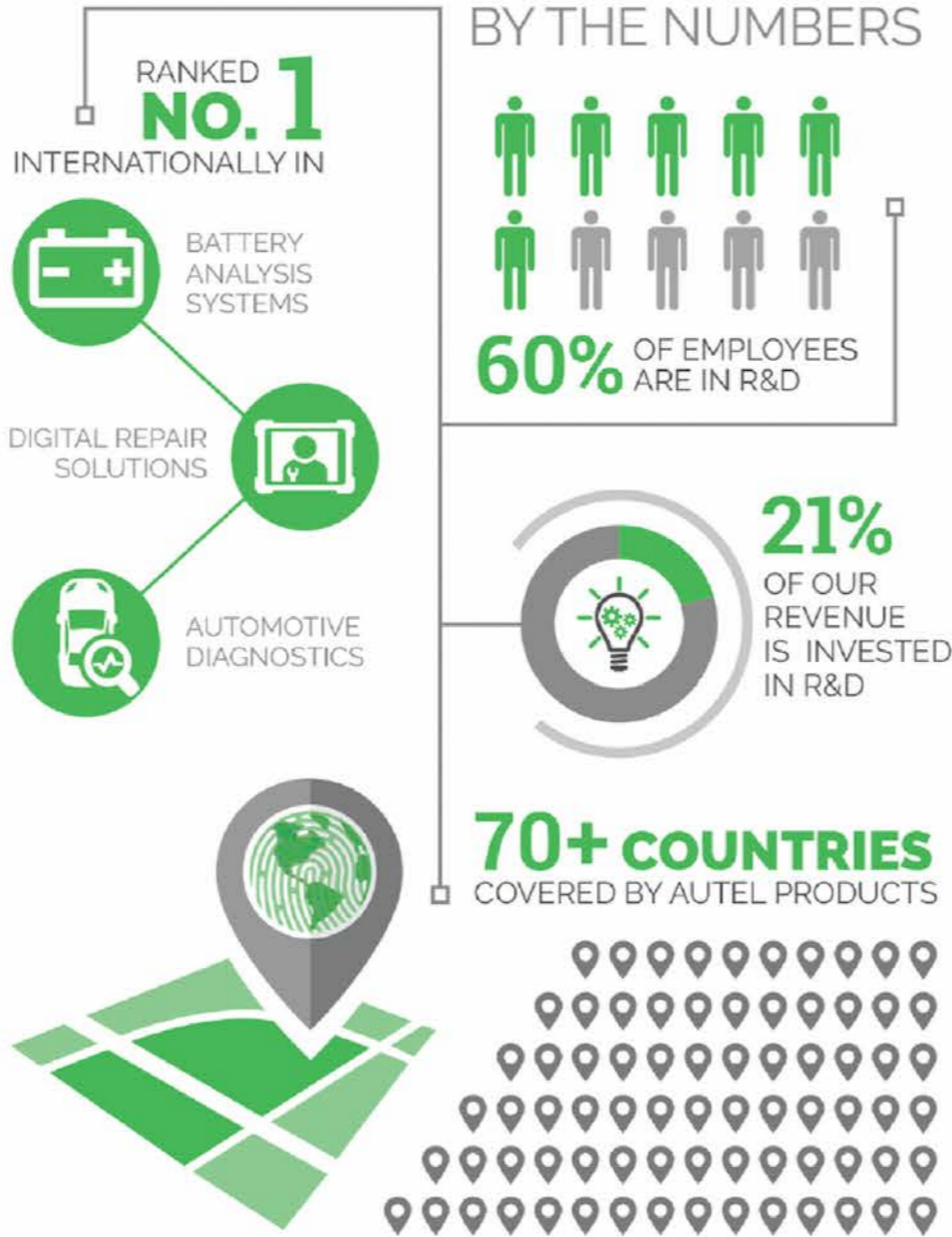
TABLE OF CONTENTS

- About Autel 2
- AC Home 6
- DC V2X 8
- AC Commercial 10
- AC Floor-Standing 12
- DC Wall-Mount 14
- DC Fast 16
- DC Fast ADV 18
- DC High Power 20
- Autel Charge App 22
- Autel Charge Cloud 24
- Smart Charging Solutions 26
- Comparison Chart 28

ICON LEGEND



WHO WE ARE



BY THE NUMBERS

New, smart, efficient energy is a fast-growing social development that has resonated throughout the global community in the past several years. This movement is organically aligned with Autel's product line evolution. We intend to become thought leaders of the industry with innovative platform solutions, while setting the benchmark of excellence for products, service and customer care.

Over the past two decades, Autel (a name born by combining "Automotive" and "Intelligence"), has revolutionized the automotive service and repair business across the globe. We were able to accomplish this feat by acquiring the best and brightest talent to develop intelligent hardware, software, and cloud-based back-end solutions.

We are now set to use the assets we've harnessed to tackle one of the greatest challenges facing our planet today - setting a smarter, greener path for generations to come.

With these resources fully committed to this mission, we will lead the global community in *Powering the Planet*. We are creating a viable and reliable ecosystem of charging solutions that will help promote the integration of electric vehicles in our daily lives, all while managing energy in our homes, businesses and communities.

Autel is building this through the development of smart charging, storage and renewable energy solutions that work in concert to improve our infrastructure, balance power and access micro grids to effectively impact and efficiently deploy energy where we need it, when we need it, and how we need it!

AUTEL FOUNDED



COMPANY TIMELINE



MAXICHARGER
DCFAST ADV



OUR STRATEGY

TO POWER THE PLANET

Autel aspires to develop technical solutions that are a catalyst for the deployment of e-mobility and electrification. We design, develop, and engineer integrated solutions that create true consumer values and ultimately solve some of the largest global issues.

OUR VISION

INGENUITY MEETS EFFICIENCY

Our vision is to exceed customer expectations while leading energy-efficient solutions with a one-stop, full-line portfolio of products that fill the gaps in our ecosystem while contributing to the global digital energy transformation.

OUR MISSION

GREEN IS IN OUR DNA

Autel is committed to creating innovative solutions so that we all can achieve carbon neutrality. Our legacy will be providing customers with superior products and services that will resonate for generations to come.

OUR ROAD MAP

ACHIEVE NET ZERO BY 2035

Autel is proud to announce our ambitious corporate commitment to take measured steps to lead our organization and our suppliers on a journey towards decarbonization by 2035.

Our entire team is committed to taking actions to achieve this milestone through green initiatives and renewable energy measures. By reducing negative contribution such as energy consumption and waste material production, our focus will be a consorted effort with lean operations and production facilities,

products, process efficiency recycling and transportation methods.

We will utilize opportunities in our upstream and downstream global value chains, working towards a supply chain that supports and exceeds our goals. We will take actions, such as planting trees to offset carbon emissions, while helping to beautify and elevated damaged ecosystems back to their former glory. Our approach will occur in three very distinct phases:

GOAL 1:

Value Chain Improvements, Recycle Materials Programs. Reductions in Production and Other Waste. **Overall Emissions Reductions by 2023.**

GOAL 2:

Reduce Facility Emission at Global Locations Through Lean Initiatives and Clean Energy Solutions. **Helping to Reduce/ Eliminate Our Global Carbon Footprint by 2028.**

GOAL 3:

Take Further Measures in Our Value Chain, Transportation and Localization. **Reduce Emissions to Reach Net Zero by 2035.**



GOAL 3:
Autel Reaches Emissions Net Zero

2019

Publicly Listed With Market Value of 4.838 Billion USD

AUTEL ENERGY LAUNCHES

GOAL 1:
Impact Measurement & Emissions Reductions

2024

GOAL 2:
Autel Factories Achieves Carbon Free Internal Footprint

2029

2034



MAXICHARGER™

MEET THE EV FAMILY TREE

YOUR ONE-STOP EV CHARGING SOLUTION



HOMECHARGERS



COMMERCIALCHARGERS

ACHOME

DCV2X

ACCOMMERCIAL

ACFLOOR-STANDING

DCWALL-MOUNT



DCFAST



DCFAST ADV



DCHIGH POWER

zenyge



AT HOME



DIMENSIONS

WIDTH: 7.36" (187mm)
HEIGHT: 13.23" (336mm)
BODY DEPTH: 3.35" (85mm)
HOLSTER DEPTH: 11.24"
(285mm)

ACCESSORIES

• FACEPLATES



• PEDESTAL & MOUNTING BRACKET

• RFID CARD



zenyge

MAXICHARGER™ ACHOME

LEVEL 2 ELECTRIC VEHICLE CHARGER

The Autel MaxiCHARGER Home makes charging your EV easy. Combining easy installation and an app to control it all from your smartphone, it will integrate perfectly into your home.

FAST HOME AC CHARGING CHARGE FASTER & MORE EFFICIENTLY

- Up to a maximum of 50A, creating 12kW of power for increased charging speed
- 9X faster than a traditional AC home charger
- Can be adjusted through a hardware switch or the APP

SMART CHARGING REAL-TIME NOTIFICATION & REPORTING

- Easily view schedules and details
- Charging status sessions

HIGH CONVENIENCE READY TO GO & EASY TO INSTALL

- Comes standard with hardwired or NEMA 14-50/6-50 plug
- Plug in system can be installed in 8 minutes
- Hardwired version requires a certified electrician

AC HOME IDEAL FOR:





V2X



MAXICHARGER™ DCV2X

THE MOST INTELLIGENT BI-DIRECTIONAL HOME CHARGER

The MaxiCharger V2X stands for vehicle-to-everything, transforming your electric vehicle's battery into an amazing energy source. Though bi-directional power conversion this technology enables you to charge and discharge your EV's battery, to power your home, or to even direct power back to the grid.

DIMENSIONS

WIDTH: 15.19" (386mm)

HEIGHT: 27.99" (711mm)

DEPTH: 6.69" (170mm)

DC V2X

IDEAL FOR:



BI-DIRECTIONAL POWER CONVERSION DESIGNED FOR MORE THAN A FAST CHARGE

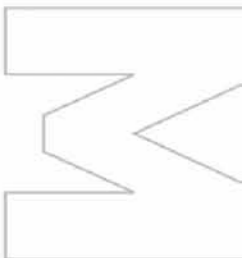
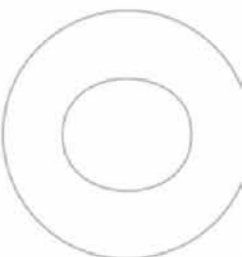
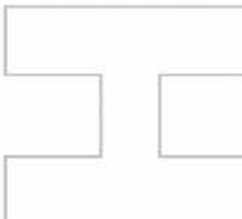
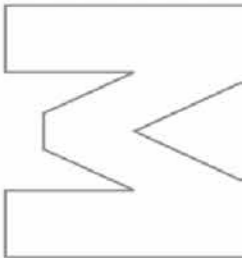
- 12kW bi-directional power supports fast charging and provides supplemental power when needed
- ENERGY STAR® certified means you use less energy and save money

INTELLIGENT SWITCHING TECHNOLOGY RELIABLE BACKUP POWER

- During a blackout, auto switch-on automatically disengages your home from the grid, and uses your EV to power your home
- The app can be configured to divert energy from your vehicle to power your home during peak times when energy costs are the highest
- V2X comes with future-ready technology, compatible with Home Energy Management System (HEMS)

SMART MICRO-GRID OF TOMORROW TODAY BUILT FOR ENERGY SAVING & A GREEN FUTURE

- When integrated with solar and energy storage your EVs becomes a micro-grid, our V2X charger enables intelligent power management distribution to cover energy demand changes and charges
- By redistributing energy back to the grid, you may be able to participate in Green Energy Trading, helping to save electricity and reduce your electric bill



zenyge

COMMERCIAL





DIMENSIONS

WIDTH: 7.36" (187mm)
HEIGHT: 13.23" (336mm)
BODY DEPTH: 3.35" (85mm)
HOLSTER DEPTH: 11.24"
(285mm)



MAXICHARGER™ ACCOMMERCIAL

LEVEL 2 ELECTRIC VEHICLE CHARGER

As the demand for EV charging continues to grow, Autel offers a variety of solutions for commercial applications. With Autel commercial charging, you can now appeal to a broader market, provide convenient solutions for EV drivers, and adapt to their needs effortlessly.

FAST COMMERCIAL AC CHARGING CHARGE FASTER AND MORE EFFICIENTLY

- Up to a maximum of 50A, creating 12kW of power for increased charging speed
- 9X faster than a traditional AC home charger
- Can be adjusted through a hardware switch or the APP

HIGH RELIABILITY AND DURABILITY BUILT TO LAST

- Evaluated and tested to UL standards
- Tested to IK10 High impact resistance
- NEMA 4 weather protection exterior rated for all-weather use
- Capable of charging at full power between -40°F to 133°F

CLOUD BASED SMART CHARGING HIGH CONVENIENCE

- Connected to Autel Cloud, an easy way to control, monitor and run your business
- In real time dynamically balance energy to reducing electricity costs
- Easy to maintain

AC COMMERCIAL IDEAL FOR:



FLOOR-STANDING



MAXICHARGER™ ACFLOOR STANDING

THE FASTEST WAY TO CHARGE
TWO VEHICLES AT THE SAME TIME

This workhorse is the most powerful dual port AC charger on the market. The system was designed to ensure form meets function, with a footprint for limited space applications. This is an ideal solution for commercial charging sites, with an 8-inch HD screen that offers the ability to generate additional ad revenue.

DIMENSIONS

Charger Only. Does Not Include Pedestal.

WIDTH: 12.60" (320mm)

HEIGHT: 24.60" (625mm)

DEPTH: 6.70" (170mm)

Charger With Pedestal.

WIDTH: 14.17" (360mm)

HEIGHT: 74.13" (1883mm)

DEPTH: 11.29" (287mm)

FAST & EFFICIENT

CREATE AN EXCEPTIONAL CHARGING EXPERIENCE

- At 19.2kW per port, this charger leads the industry by fast charging 2 vehicles simultaneously, and generates 75 miles of range within 60 min
- Design with ISO 15118 Plug & Charge for a hassle-free charging experience

BEST-VALUE DESIGN

TAILORED FOR COMMERCIAL DEPLOYMENT

- The rugged design can be wall-mounted or floor-mounted
- One-piece construction makes it easy to install resulting in a lower costs of total owner and a faster ROI

SMART CHARGING

FUTURE-PROOF & FLEXIBLE TO IMPROVE YOUR BOTTOM-LINE

- Smart functionality with OCPP 1.6 and 2.0.1 compliant, can adapt its power usage and provide optimal charging today and into the future
- Reduce Capital investment of power capacity and Operating Expense of demand charges

AC COMMERCIAL IDEAL FOR:





AUTEL



WALLMOUNT

zenyge



DIMENSIONS

Charger Only,
Does Not Include Pedestal.

WIDTH: 21.65" (550mm)

HEIGHT: 39.37" (1000mm)

DEPTH: 10.23" (260mm)



MAXICHARGER™ DC WALL MOUNT

BIG POWER & VALUE IN A COMPACT PACKAGE

The MaxiCharger DC Compact offers the best values with 40kW of smart charging power, advertising and communication capability in a perfect size to fit almost any application.

FAST & EFFECTIVE

BUILT TO INCREASE CHARGING EFFICIENCY

- Dual-ports provide up to 40kW of power
- Charge 2 vehicles simultaneously
- A 30 min charge equates to 80+miles of range

COMPACT DESIGN

OPTIMIZED FOR ANY LOCATION

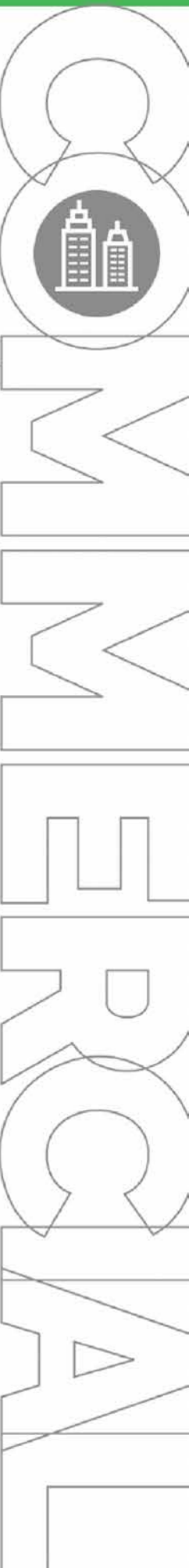
- Ultra-compact with big DC power in a small package
- Compared to other DC chargers, DC Compact has the lowest installation costs, meaning a faster ROI due to reduced capital savings for the site operator

SMART ADVERTISING & COMMUNICATION PLATFORM

IMPROVE YOUR ROI

- User-friendly 21.5-inch LCD touch screen
- Powered by smart operating system, Android 10 with enhanced advertising placement
- Communicate, promote or attract customers generating new revenue streams

DC WALL-MOUNT IDEAL FOR:





FAST



DIMENSIONS

60KW/120KW

WIDTH: 32.28" (820mm)

HEIGHT: 76.77" (1950mm)

DEPTH: 23.62" (600mm)

180KW/240KW

WIDTH: 32.28" (820mm)

HEIGHT: 76.77" (1950mm)

DEPTH: 27.55" (700mm)



MAXICHARGER™ DCFAST

MOST FLEXIBLE LEVEL 3 DC FAST CHARGER

When you need power now, this future-ready innovative design delivers up to 240kW and is perfect for fleet applications and highways service centers. Faster charging means less time waiting and an enhanced user experience. The Maxicharger DC Fast is the unrivaled EV charger solution for people and business where time is the most value asset.

POWERFUL CHARGE FASTER AND MORE EFFICIENTLY

- Up to 240 kW of fast charging
- Provides up to 125 miles of range in 10min with a maximum 400A output current
- Charging speed improved by up to 30%

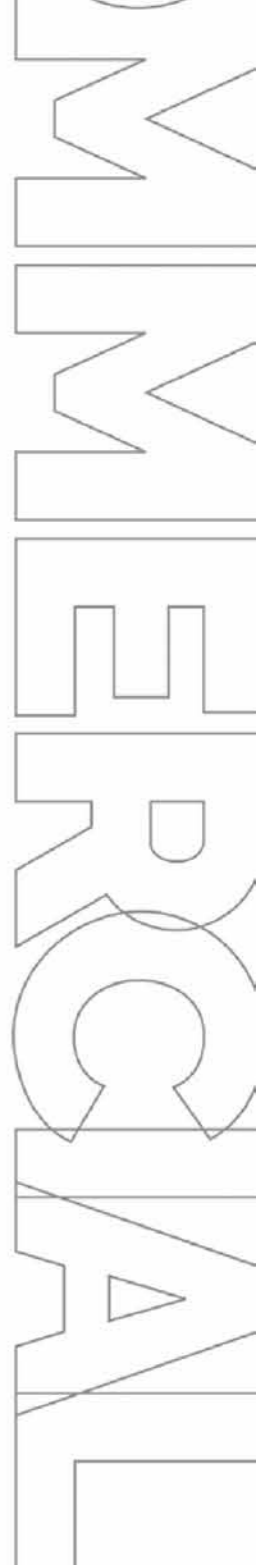
SMART ADVERTISING AND COMMUNICATION PORTAL IMPROVE YOUR ROI

- Displays charging related info including; State of Charge (SOC), Cost, kWh
- Offer an additional channel to boost revenue with the display of advertisements
- Communicate, promote or attract customers generating new revenue streams

HIGHLY RELIABLE CHARGE WITHOUT WORRIES

- Continued software development for new vehicle compatibility
- Compatible with all vehicles of IEC standards
- Charging success rate higher than industry average

DC FAST IDEAL FOR:



zenyge

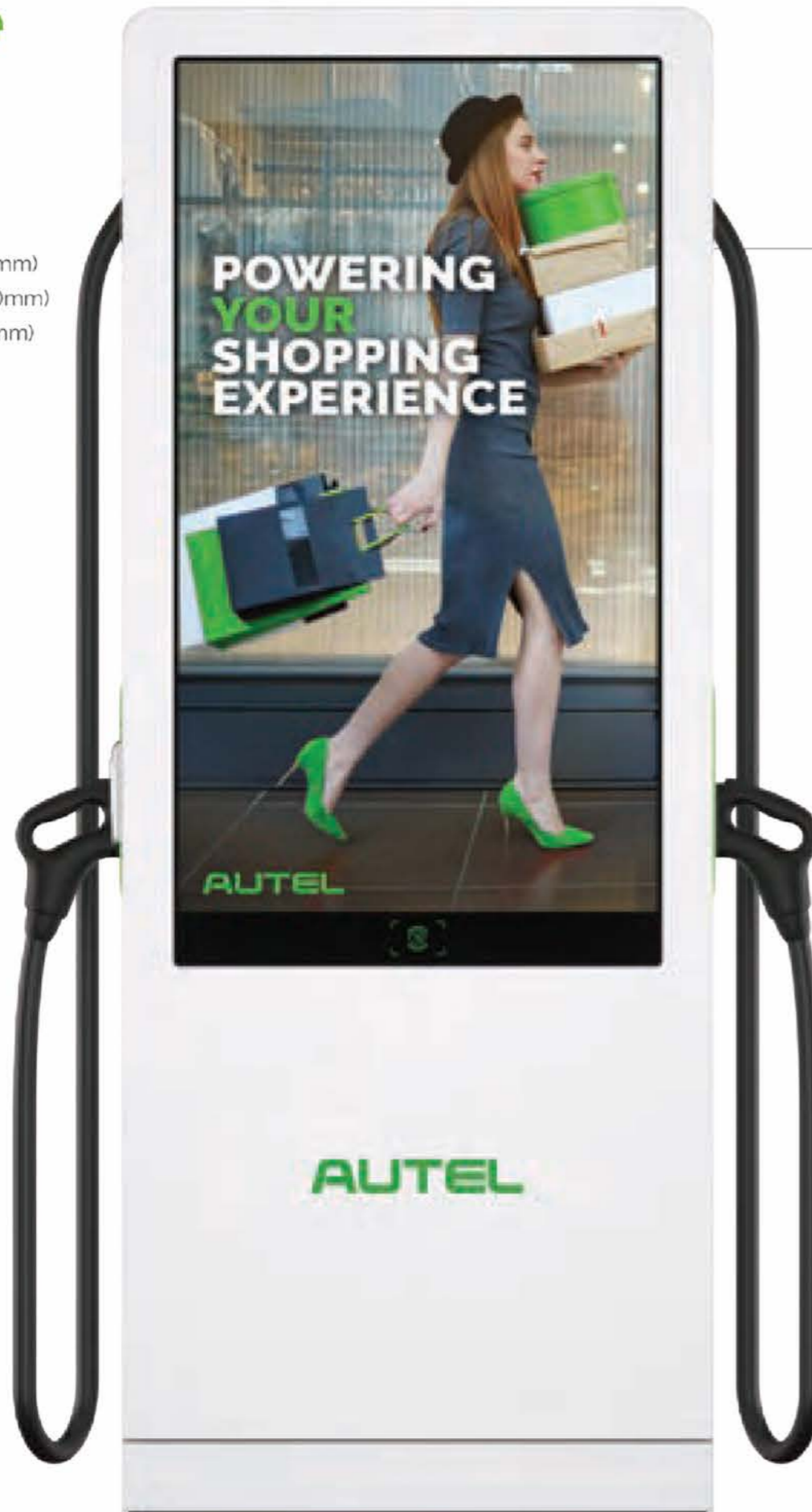
FAST ADV





DIMENSIONS

WIDTH: 32.28" (850mm)
HEIGHT: 76.77" (2160mm)
DEPTH: 27.56" (700mm)



MAXICHARGER™ DCFAST ADV

THE FASTEST 4K ADVERTISING CHARGER
ON THE PLANET

This slim innovative DC charger fits in almost any commercial application and combines fast charging with a cloud-based smart advertising and communication portal. MaxiCharger is an unrivaled charging solution for boosting operational revenues and profits.

POWERFUL & SMART
BUILT TO IMPROVE THE USER EXPERIENCE

- Fast charge up to 160kW, while adding up to 105 miles of range in 10 mins
- Charge at full power without the concern of overheating with natural-cooling tech, charging speed can be increased up to 30% without overheating
- Plug & Charge 15118 capability total vehicle connectivity
- OCPP compatibility allows for extended network integration

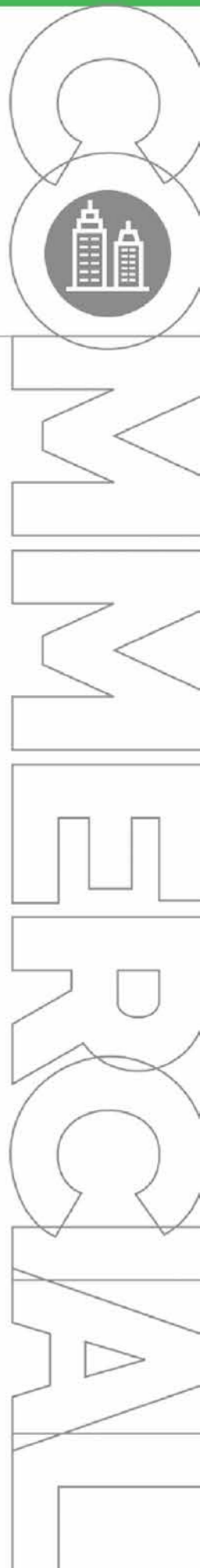
HIGH-DEFINITION SCREEN
DESIGNED FOR A PREMIUM RESOLUTION IN AN OUTDOOR SETTING

- 55-inch 4K HD LCD screen with mini-LED technology for stunning picture quality
- A 2500 lumens bright screen ensures the best outdoor viewing

SMART ADVERTISING & COMMUNICATION PORTAL
IMPROVE YOUR ROI

- AI customer-matching technology allows for targeted advertising
- Advanced wireless casting technology mirrors your smartphone on the display
- Access to global media assets and resources
- Powered by Android 10 dual-systems for more innovative applications
- Communicate, promote or attract new audiences

DC FAST ADV IDEAL FOR:





HIGH POWER



POWER UNIT DIMENSIONS

WIDTH: 55.5" (1410mm)
HEIGHT: 85" (2160mm)
DEPTH: 35" (898mm)



USER UNIT DIMENSIONS

WIDTH: 33.5" (850mm)
HEIGHT: 85" (2160mm)
DEPTH: 15.75" (400mm)

MAXICHARGER™ DCHIGH POWER

FOUR TIMES THE PORTS, POWER & PROMOTION

When you need power now, this future-ready innovative design delivers up to 480kW and is perfect for fleet applications and highways service centers. Faster charging means less time waiting and an enhancing user experience. The Maxicharger High Power is the unrivaled EV charger solution for people and business where time is the most value asset.

**BEST-IN-CLASS HARDWARE
BUILT FOR OPTIMAL PERFORMANCE**

- Up to 650A through liquid-cooling technology provides up to 250 miles of range in 10min
- Charge 4 vehicles simultaneously with up to 480kW of power

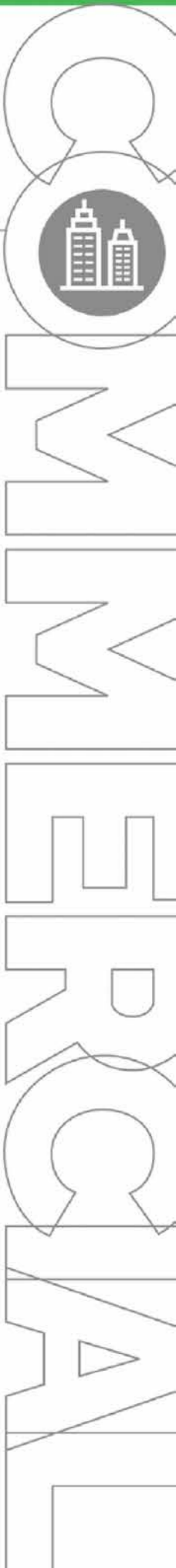
**HIGH RELIABILITY & DURABILITY
MONITORED WITH BIG TECH TO REDUCE COSTS**

- Electrochemical and big data algorithms anticipate, manage and predict over-heat conditions before they occur, protecting your assets and lower Operation and Maintenance (O&M) costs
- When integrated with the vehicle telematics our state-of-the-art AI algorithms intelligently optimizes the charging strategy

**SMART ADVERTISING & COMMUNICATION PORTAL
IMPROVE YOUR ROI**

- Four 55-inch 4K HD LCD screens with mini-LED technology designed for the excellent outdoor viewing
- AI customer-matching technology allows for targeted advertising
- Access to global media assets and resources
- Advanced wireless casting technology can mirror your smartphone on the display
- Powered by Android 10 dual systems for more innovative advertising and more revenue

DC HIGH POWER IDEAL FOR:



zenyge

CHARGE APP



MAXICHARGER™ CHARGEAPP

SMART CHARGING FROM YOUR SMART DEVICE

The Autel Mobile Charge App, makes monitoring your charging process is quicker and more convenient than ever. At the tap of a finger, you can track, manage and optimize your EV charging at any time.



Optimize Your Charging Routine to Complement Your Lifestyle. Start, Stop or Schedule Charging Using Remote Access, Straight from Your Smart Device.



Receive Notifications When Your Car is Done Charging.

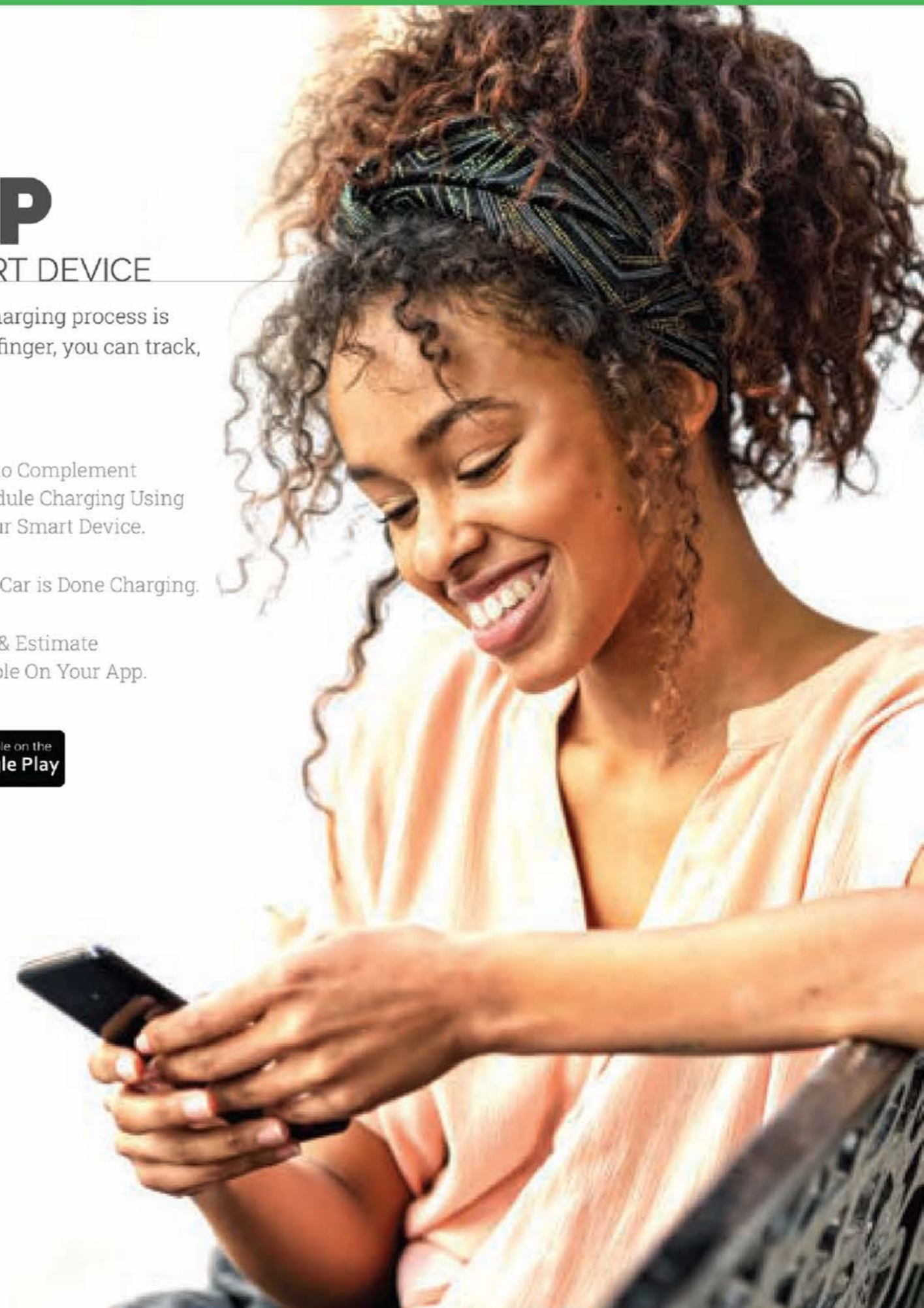


Track Your Energy Consumption & Estimate Your Utility Costs, Easily Accessible On Your App.

Available At



zenyge



An aerial photograph of a large parking lot filled with cars. A white, semi-transparent grid of irregular polygons is overlaid on the image, resembling a map or a data visualization. The grid lines connect various points across the parking lot, creating a network of shapes that roughly correspond to the layout of the parking spaces and lanes.

CHARGECLOUD



AUTEL® zenlyge

CHARGE CLOUD

VISUALIZE, MONETIZE & OPTIMIZE YOUR CHARGING NETWORK

Get complete control and visibility on your network with the Autel Charge Cloud. The only all-in-one charging cloud on the market, giving you control of operations, maintenance and advertising management, reducing your O&M costs as well as increases revenue through innovative advertising.



INTELLIGENT OPERATION EFFORTLESSLY MANAGE & OPTIMIZE CHARGING OPERATIONS

- Set prices designated by driver type, session length, energy cost and time of use
- Big data and AI-driven algorithms enable smart pricing and marketing strategy
- Real-time tracking of all charger activity by user, location, and timeframe

CLOUD BASED SMART CHARGING ADVANCED CHARGING MANAGEMENT

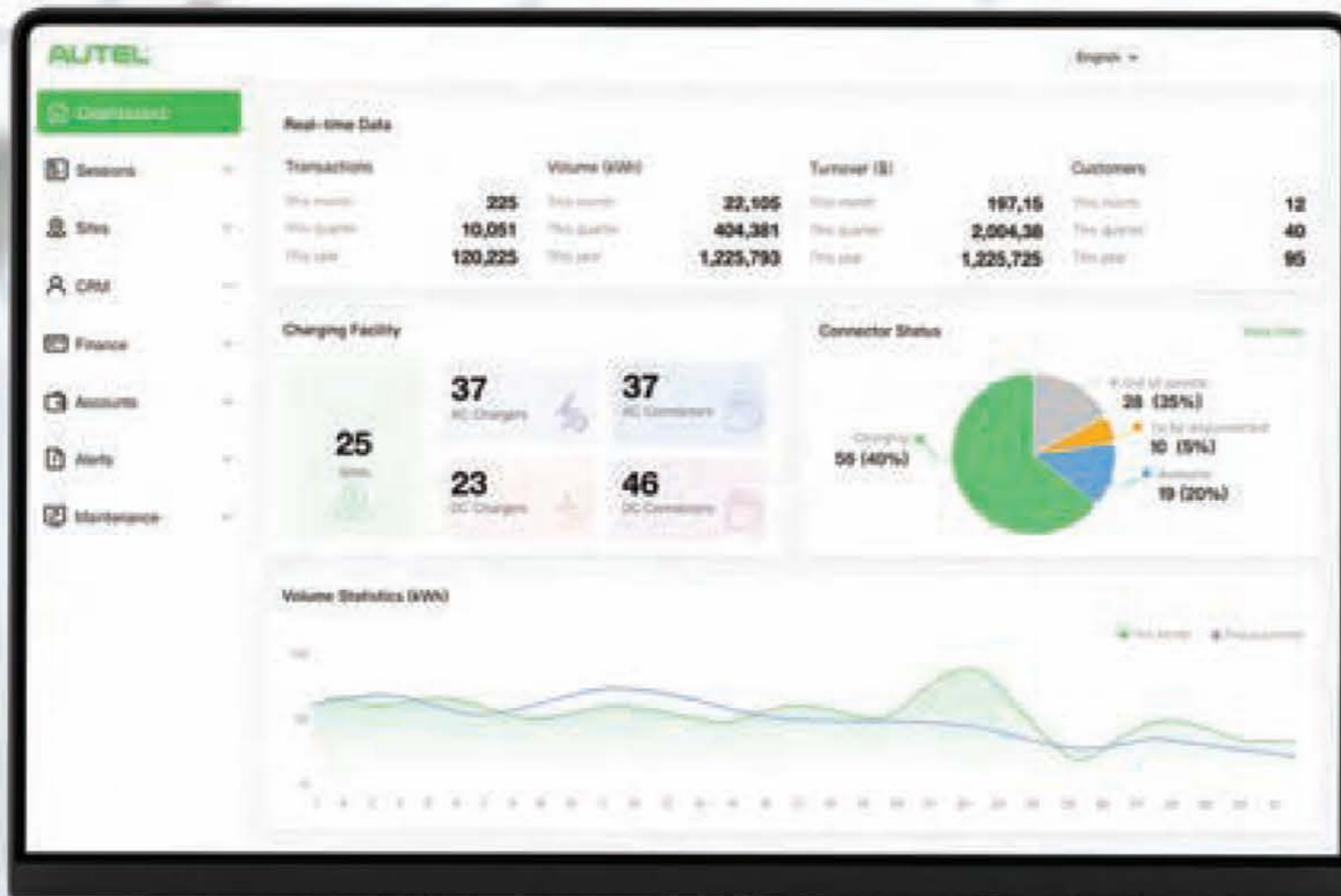
- In real time dynamically balance energy to reduce electricity costs
- Set and automatically adjust charging current by pre-setting energy demand requirements and price thresholds
- Smart charging prioritization according to vehicle State of Charge and scheduling

REMOTE MAINTENANCE MONITORING ROBUST & RELIABLE MAINTENANCE SYSTEM

- Remote diagnosis and troubleshooting
- Reduce repair time and minimize operational costs

SMART ADVERTISING & COMMUNICATION PORTAL IMPROVE YOUR ROI & BOTTOM-LINE

- Easily access to global media assets and resources
- Conveniently localize community advertisement, promotion and communication
- Use advertising to diversify revenue



MAXICHARGER
ACFLOOR
STANDING



AUTEL® SMARTCHARGING SOLUTIONS

YOUR ONE-STOP EV CHARGING SOLUTION PROVIDER

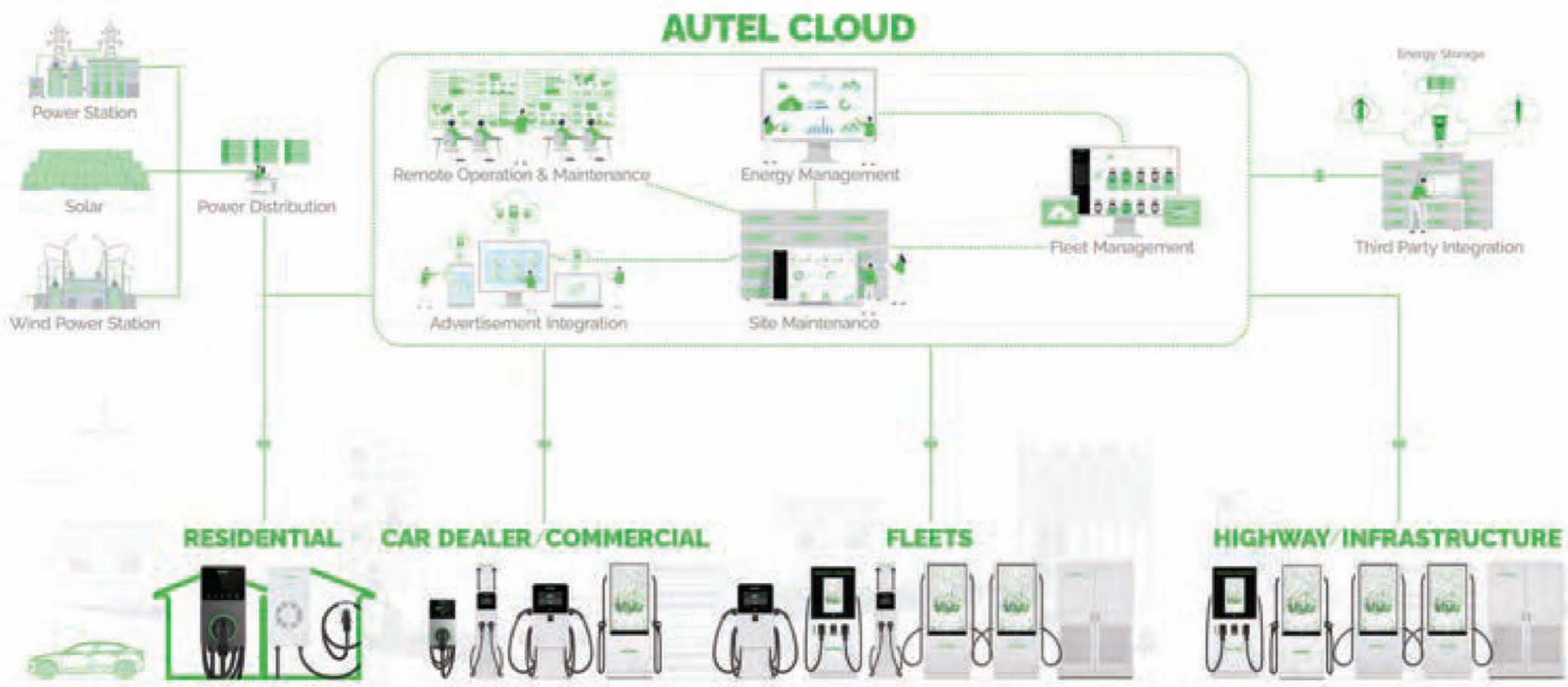
Autel has uniquely positioned ourselves to be the "One-Stop EV Charging Solution Provider". Our MaxiCHARGER family is focused on high style, great value, rich features, and a solution-based technology that supports almost every use case imaginable.

We combine multifunctionality, reliability, high-quality, innovation, advertising, and communication in a stylish future-proof package. Save money, balance energy, and manage your network, ALL through Autel's MaxiCHARGER. Using our products and services, is easy, fast and a pleasant experience.

We have optimized our products usability, through easy-to-use APP's and cloud-based backends, that allows you to seamlessly navigate, control and manage your assets. Distribute your power to ensure you have power when you need it, where you need it, and how you need it.

We stand behind our products with best-in-industry warranties and superior 24/7 customer care. We pride ourselves in our passion and dedication to consumers and businesses alike, by producing the highest quality chargers and providing intelligent platform solutions.

THE PLANET





POWERFUL
FEATURES
& INNOVATIVE
OPTIONS TO
POWER YOUR
**HOME
BUSINESS
& LIFE**

We believe in the power of innovation and the importance of versatility. We live at the intersection of technology and practicality, making the most advanced energy solutions accessible and convenient for residential and commercial applications. Because we deliver the highest quality products at a great value, our customers can feel at ease knowing that they have made the right choice for their EV charging needs, their planet and their wallet. ■

MAXICHARGER™



CHARGERS SHOWN TO SCALE



HOMECHARGERS



COMMERCIALCHARGERS



FEATURES

ACHOME

DCV2X

ACCOMMERCIAL

DIMENSIONS

WIDTH: 7.36" (187mm)
HEIGHT: 13.23" (336mm)
DEPTH: 3.35" (85mm)

DIMENSIONS

WIDTH: 15.19" (386mm)
HEIGHT: 27.99" (711mm)
DEPTH: 6.69" (170mm)

DIMENSIONS

WIDTH: 7.36" (187mm)
HEIGHT: 13.23" (336mm)
DEPTH: 3.35" (85mm)

FEATURES	ACHOME	DCV2X	ACCOMMERCIAL
KILLOWATTS (kW)	9.6kW/12kW	7/12kW	12kW
DYNAMIC LOAD BALANCING (DLB)	●	●	●
ADAPTIVE LOAD MANAGEMENT (ALM)	●	●	●
ISO 15118 PLUG & CHARGE	—	●	—
OPEN CHARGE POINT PORTOCAL (OCPP)	—	—	●
CONTENT MANAGEMENT SYSTEM (CMS)	—	—	—
REGULATORY CERTIFICATIONS CSA UL	●	●	●
ENERGY STAR	●	—	●
POINT OF SALE (POS)	—	—	—
ADVERTISEMENT & COMMUNICATION	—	—	Optional
SCREEN SIZE	—	—	5"
NUMBER OF CHARGING PORTS	1	1	1



AC FLOOR-STANDING

DIMENSIONS (With Pedestal)
 WIDTH: 14.17" (360mm)
 HEIGHT: 74.13" (1883mm)
 DEPTH: 11.29" (287mm)

DC WALL-MOUNT

DIMENSIONS (Charger Only)
 WIDTH: 21.65" (550mm)
 HEIGHT: 39.37" (1000mm)
 DEPTH: 10.23" (260mm)

DC FAST

DIMENSIONS (60kW/120kW) (180kW/240kW)
 WIDTH: 32.28" (820mm) 32.28" (820mm)
 HEIGHT: 76.77" (1950mm) 76.77" (1950mm)
 DEPTH: 23.62" (600mm) 27.55" (700mm)

DC FAST ADV

DIMENSIONS
 WIDTH: 32.28" (850mm)
 HEIGHT: 76.77" (2160mm)
 DEPTH: 27.56" (700mm)

DC HIGH POWER

DIMENSIONS (User Unit) (Power Unit)
 WIDTH: 33.5" (850mm) 55.5" (1410mm)
 HEIGHT: 85" (2160mm) 85" (2160mm)
 DEPTH: 15.75" (400mm) 35" (898mm)

AC FLOOR-STANDING	DC WALL-MOUNT	DC FAST	DC FAST ADV	DC HIGH POWER
19.2kW Per Charging Port	40kW	60kW/240kW	120kW/160kW	360kW/480kW
●	●	●	●	●
●	-	-	-	-
●	●	●	●	●
●	●	●	●	●
●	-	Optional	Optional	Optional
●	●	●	●	●
●	-	-	-	-
●	●	●	Optional	●
●	●	●	●	●
8"	21.5"	27"	55"	55"
2	2	2	2	4

AUTEL[®]
Powering the Planet



AUTELENERGY.COM

FOLLOW US: @AUTELENERGY



ZENYGE.COM

FOLLOW US: @ZENYGE