





The 6 Stars

A Different Kind of Experience

- The Corporate Team
- Our Products
- The Timing
- The Compensation Plan
- Our Cause
- Faith & Family with a Promise

THE CORPORATE TEAM



**ROB
ALWIN**

CEO & Founder



**TRACY
GIBBS Ph.D.**

Co-Founder &
Chief Science Officer



**CHRIS
CLEM Ph.D.**

President



**GREGG
ADELMAN**

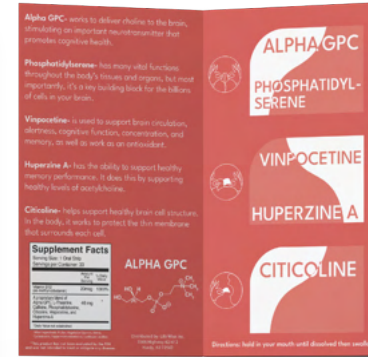
Vice President



**JAMES
DUFOUR**

Chief Intelligence Officer

Our Products





Dream

Supports Healthy
Sleep Patterns

Assists in Calmness
& Mood

A Beneficial
Antioxidant



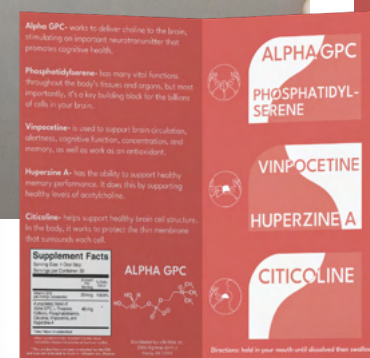


Clarity

Supports Energy
Productions

Nourishes & Feeds
the Brain

Promotes Healthy
Cognitive Function





Shield

Supports Healthy Immune Function

22 Patents and 45 Peer-Reviewed, Clinical Studies

Dissolve-in-Mouth Oral Strips



Restore

Supports the Body's
Inflammation Responses

Promotes Healthy
Muscle/Joint Functions

Provides Antioxidant
Support



The One

Over 32 Superfoods
and 72 Trace Minerals

7 Digestive Enzymes,
9 Strains of Probiotics
and Prebiotics

All the Essential Fatty
Acids Like: Omega 3, 5,
6, 7, and 9





L.E.A.D

Lead has monthly modules at \$35/module.
(Leadership Development, Financial
Well-Being, Mental and Emotional
Well-Being, Goal-Setting Skills, Better
Parenting Skills, etc.)

Advantages of Life Wise's Uni-Level Business Model

- Each partner builds a single business level
- Start your business & earn with minimal investment
- Not required to buy or sell large packs
- Earn up to 7 levels deep, regardless of rank.
- Buy only what you need or want



Life Wise Revenue Sharing Plan

- All Life Wise Partners are paid 7 levels deep, regardless of rank or volume
- Those who purchase L.E.A.D. within 28 days of joining are paid on the 8th level
- Earnings are based on the number of products sold at each level
- \$1 per product sold is donated to the Tunnels to Towers Foundation

Frontline Revenue Share (Level 1)

1

Earn From All Your:

- Personally Enrolled Customers
 - Personally Enrolled Partners
-

Generation Revenue Share Bonus (Levels 2 – 7)

2

Earn From All Your:

- Team's Customers
- Team's Partners

First Order Bonus (Level 1-7):

- First Time Order of over \$100
 - \$5 From Each First Order
-

3

L.E.A.D. From Day 1 Revenue Share Bonus (Unlocks Level 8)

4

Leadership Bonus (Levels 9 - 10)

Be a Diamond to unlock level 9 or a Black Diamond to unlock level 10

- 9th Level - Make \$3000/pay cycle & help at least 3 people go Ruby
- 10th Level - Make \$5000/pay cycle & help at least 3 people go Emerald



DEPTH

WIDTH

Level 1	\$5	\$5	\$5	\$5	Unlimited
Level 2	\$3	\$3	\$3	\$3	Unlimited
Level 3	\$2	\$2	\$2	\$2	Unlimited
Level 4	\$1	\$1	\$1	\$1	Unlimited
Level 5	\$1	\$1	\$1	\$1	Unlimited
Level 6	\$1	\$1	\$1	\$1	Unlimited
Level 7	\$1	\$1	\$1	\$1	Unlimited

Level 8	\$1	\$1	\$1	\$1	Unlimited
Unlocked by purchasing L.E.A.D. every month					
<hr/>					
Level 9	\$1	\$1	\$1	\$1	Unlimited
Unlocked by making \$3000/pay cycle & helping at least 3 people go Ruby					
<hr/>					
Level 10	\$1	\$1	\$1	\$1	Unlimited
Unlocked by making \$5000/pay cycle & helping at least 3 people go Emerald					

Comp Plan Pools

BRONZE PROFIT-SHARE POOL

- ✓ \$200 - \$299 PER PAY PERIOD
- ✓ YOU AND AT LEAST 4 PERSONALS ENROLLED IN L.E.A.D. ACADEMY
- ✓ \$1 FROM EVERY PRODUCT SOLD WORLD-WIDE WILL GO INTO THE BRONZE POOL
- ✓ EQUALLY SHARE IN THE PROFIT POOL EACH WEEK YOU ARE BRONZE QUALIFIED

SILVER SAMPLER PROFIT-SHARE POOL

- ✓ \$300 - \$499 PER PAY PERIOD
- ✓ PURCHASE THE SAMPLER PACK WITHIN 28 DAYS OF JOINING LIFE WISE, AND CONTINUE PURCHASING MONTHLY
- ✓ \$1 FROM EVERY PRODUCT SOLD WORLD-WIDE WILL GO INTO THE SILVER POOL
- ✓ EQUALLY SHARE IN THE PROFIT POOL EACH WEEK YOU ARE SILVER QUALIFIED

The Power of 4

Imagine the possibilities if each partner connects just 4 people with Life Wise products!



4	+	4	+	4	+	4
16	+	16	+	16	+	16
64	+	64	+	64	+	64
256	+	256	+	256	+	256
1024	+	1024	+	1024	+	1024
4096	+	4096	+	4096	+	4096
16384	+	16384	+	16384	+	16384

$$4 \times \$5 = \$20$$

$$16 \times \$3 = \$48$$

$$64 \times \$2 = \$128$$

$$256 \times \$1 = \$256$$

$$1024 \times \$1 = \$1,024$$

$$4096 \times \$1 = \$4,096$$

$$16384 \times \$1 = \$16,384$$

$$\begin{aligned} & \$20 + \$48 + \$128 + \$256 + \\ & \$1,024 + \$4,096 + \$16,384 \\ & = \$21,956 \end{aligned}$$

Potential Earnings

\$21,956

Ranks Explained

The first 3 Life Wise Ranks Are Determined By The Checks You Earn

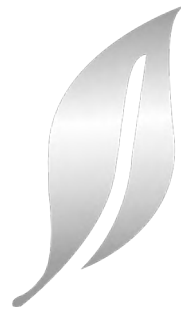


BRONZE

When you Earn:

\$200–\$299

of Income in a
single pay period



SILVER

When you Earn:

\$300–\$499

of Income in a
single pay period



GOLD

When you Earn:

\$500–\$999

of Income in a
single pay period

THE LIFE WISE Q12 GOLD CRUISE



- ✓ \$500 - \$999 PER PAY PERIOD
- ✓ QUALIFY FOR GOLD AT LEAST ONCE IN A PAY PERIOD
- ✓ RECEIVE A FREE CRUISE FOR YOU AND YOUR SPOUSE (if applicable)
- ✓ FELLOWSHIP WITH US ON A FREE CRUISE EVERY YEAR THAT YOU MEET THE CRITERIA!

*every year thereafter, you must go Gold at least once a month to qualify.

Ranks Explained

These ranks are based on your earned checks & the growth of the partners who advance in rank alongside you.



RUBY

When you Earn:

\$1000–\$1999

of Income in a
single pay period

& 3 of your partners
(or any of theirs)
are “Silver” partners



EMERALD

When you Earn:

\$2000–\$2999

of Income in a
single pay period

& 3 of your partners
(or any of theirs)
are “Gold” partners



DIAMOND

When you Earn:

\$3000–\$4999

of Income in 3
consecutive pay periods

& 3 of your partners
(or any of theirs)
are “Ruby” partners



BLACK DIAMOND

When you Earn:

\$5000+

of Income in 4
consecutive pay periods

& 3 of your partners
(or any of theirs)
are “Diamond” partners

Key Benefits of Life Wise

Traditional Business vs. Network Marketing

Traditional Business

- High Risk
- High Start Up Cost
- High Overhead
- Employees
- Headaches

Network Marketing

- Low Risk
- Low Cost of Entry
- Work With Partners Not Employees
- Work As a Team
- Leverage

Our Cause



**With Every Purchase
You Make, We're
Proud to Donate \$1**

Learn more at www.t2t.org

**Come Grow
With Us!**



Welcome Home