

CHARGED

10-Minute Non-Progressive Color

CUT TIME,
NOT CORNERS



MIXING NOTES

| | |
|-------------------------|--|
| Activator | Jack Winn Pro Charged Activator |
| Mixing | 1:1 ratio = 1 tube (60ml) + 60ml activator |
| Development Time | 10 minutes |

How to Use

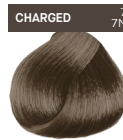
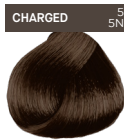
- 1** Spray *Fix Prep Spray* throughout hair to keep hair in optimal condition.
- 2** Apply *Trace* to the hairline to prevent staining the skin.
- 3** Mix Charged 10-minute Envelop Permanent Creme Color 1:1. Apply evenly on the regrowth and leave on for 10 minutes.
- 4** After the processing time, rinse thoroughly with water and wash with Jack Winn Fix or Biobond Shampoo. After shampooing, apply Fix Leave-in.

CHARGED

10-Minute Non-Progressive Color

Charged has **12 carefully-curated shades** ranging from rich browns to radiant blondes to ravishing reds, ensuring there's a **perfect match for every client.**

12 New Shades



GET TO KNOW CHARGED

| | CHARGED | <i>Envelop</i> | COMPETITION | BENEFITS |
|---------------------------------------|---------|----------------|-------------|--|
| CONTROL CHARGED TECHNOLOGY | ✓ | ✗ | ✗ | WILL NOT OVERPROCESS & GIVES RELIABLE, TARGETED RESULTS |
| FORMULATED WITH FIX IN MIND | ✓ | ✓ | ✗ | HELPS PROTECT HAIR FROM EXTRA DAMAGE |
| FORMULATED WITH BOTANICAL INGREDIENTS | ✓ | ✓ | ✗ | ALOE VERA FOR SCALP CARE, PLUS REDUCED AMMONIA |
| 10 MINUTE PROCESSING TIME | ✓ | ✗ | ✓ | PROCESSES IN JUST 10 MINUTES |
| 100% GRAY COVERAGE | ✓ | ✓ | ✓ | PROVIDES 100% GRAY COVERAGE |
| ADDITIVE POTENTIAL | ✓ | ✗ | ✗ | CAN BE USED AS AN ADDITIVE ON LEVEL WITH ENVELOP FOR EXTRA GRAY COVERAGE |